

Update report to the GwE Joint Committee on the region's KS4 performance

November 2016

UPDATE REPORT ON THE KS4 PERFORMANCE OF SCHOOLS IN THE GWE REGION [NOVEMBER 2016]

Introduction

The main purpose of the report is to present an update on end of Key Stage 4 (KS4) performance for the 2015/2016 academic year. It must be emphasised that the information presented on KS4 results is still provisional. Due care is required when considering the information since neither the analysis nor the comparisons will be completed on national level until the turn of the year.

The report is an important part of the self-evaluation process and provides an opportunity to ask questions on how the region is performing and what is needed moving forward.

Context

Table 1 shows the % of pupils of statutory school age entitled to free school meals over the last five years in comparison to Wales and the individual authorities.

Table 1: % pupils of statutory school age entitled to free school meals [FSM]

	2013		2014		2015		2016	
	%	Rank	%	Rank	%	Rank	%	Rank
Anglesey	20.5	13	18.5	11	17.4	11	17.0	10
Gwynedd	13.7	5	12.9	4	13.3	4	13.0	4
Conwy	18.3	9	18.1	10	17.1	9	16.2	8
Denbighshire	19.1	11	19.4	13	19.0	13	19.1	14
Flintshire	13.5	4	13.9	5	14.9	6	15.0	6
Wrexham	18.1	8	18.0	9	16.6	8	16.4	9
GwE	16.7	1	16.4	1	16.1	1	15.9	1
Wales	19.5		19.1		18.8			

The ranking indicates the authorities' positions in comparison to the Welsh authorities, with the highest ranking indicating the smallest cohort of 5-15 year old pupils receiving FSM. The region's FSM % is the lowest out of the 4 consortia. The Table suggests that, providing that the right to free school meals is an appropriate measure of deprivation, Anglesey's performance in 2016, for instance, should be around tenth of all of the Welsh authorities, i.e. corresponding to the free school meal ranking.

For the first time, this year's national figures include 'Other EOTAS'. Therefore, the data presented include the 'Other EOTAS' for national comparison and without these figures for comparison with previous years.

Performance at Key Stage 4

Key Performance Indicators

The progress in the percentage of pupils achieving the Level 2 inclusive [L2+] is significantly higher this year [+2.0% or +3.0% without 'Other Eotas'] compared to the progress seen in 2015 [0.4%]. In 2016, each of the 6 authorities has made progress in the L2+, with the greatest progress seen in Gwynedd and Denbighshire.

Table 2a: % learners achieving in the Level 2 Inclusive Threshold [L2+] without 'Other EOTAS'

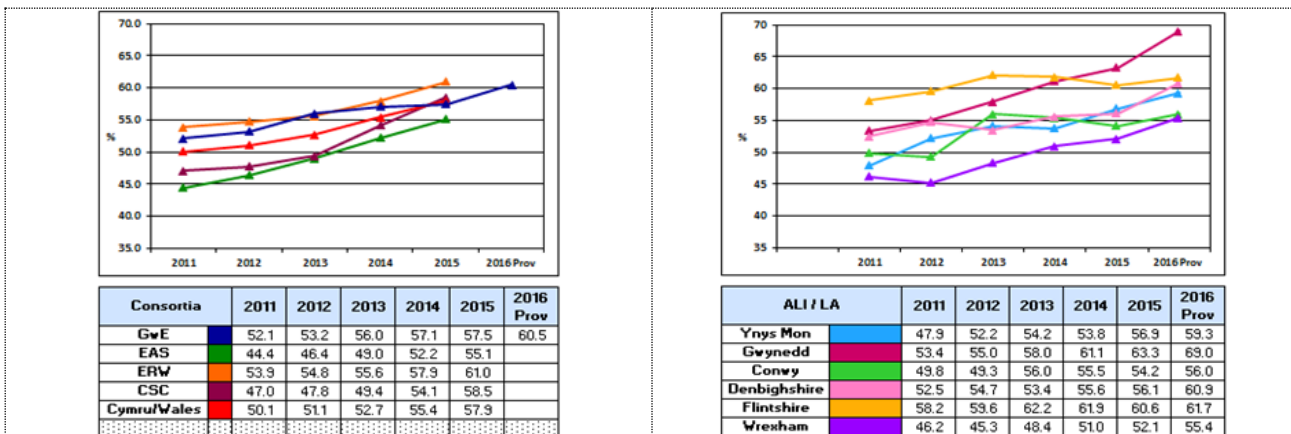


Table 2b: % learners achieving in the Level 2 Inclusive Threshold [L2+] with 'Other EOTAS'

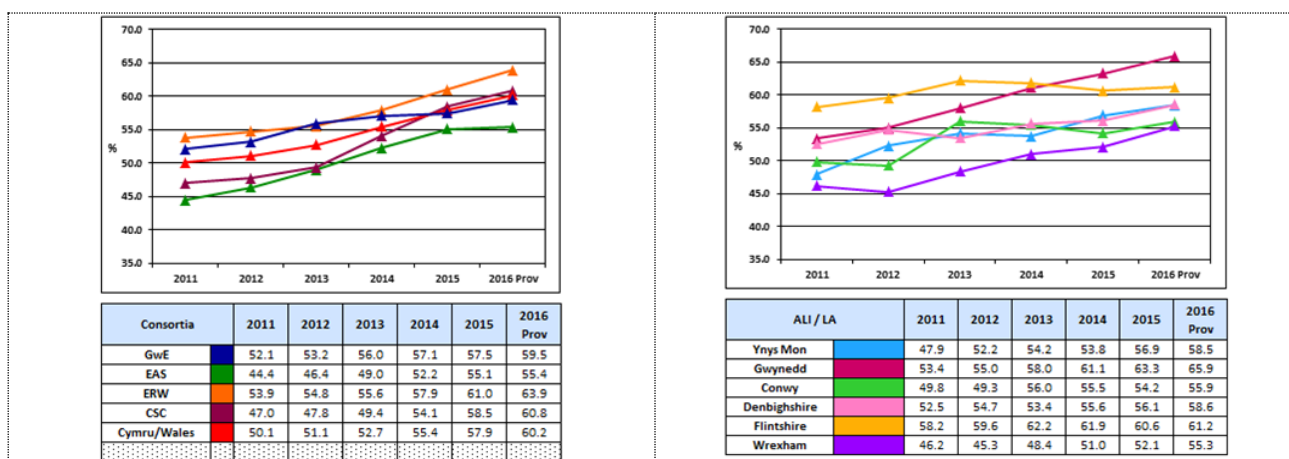


Table 3 ranks each LA's performance in the key performance indicators [Level 2+, Level 1, Level 2, Capped Points Score and 5A*-A] in comparison with all 22 Local Authorities across Wales.

Table 3: summary of the authorities' rankings in the key performance indicators at KS4

	2014					2015					2016				
	L2+	L1	L2	CPS	5A*-A	L2+	L1	L2	CPS	5A*-A	L2+	L1	L2	CPS	5A*-A
Anglesey (10)	14	6	9	3	10	12	8	16	9	13	14	5	15	11	10
Gwynedd (4)	5	1	4	1	2	5	1	6	1	3	4	1	9	4	8
Conwy (8)	11	8	8	11	8	18	14	14	17	16	17	17	16	17	19
Denbighshire (14)	10	11	2	5	9	14	17	10	11	8	13	20	14	16	14
Flintshire (6)	3	14	15	13	19	8	18	15	15	15	10	13	17	15	12
Wrexham (9)	18	21	21	20	20	20	20	22	21	20	18	19	21	18	20
GwE (1)	2	2	2	2		3	3	3	3		3	-	-	3	

The performance of individual local authorities varies considerably across the region. In 2016, Gwynedd and Denbighshire are the only two authorities that perform as expected in the L2+. Generally this year, Gwynedd, Denbighshire and Anglesey perform as expected in the majority of the indicators; Flintshire are below expectation in all, with Wrexham and Conwy significantly so. Improving standards in those local authorities that are performing lower than their comparative FSM ranking is a major priority.

Core Subjects

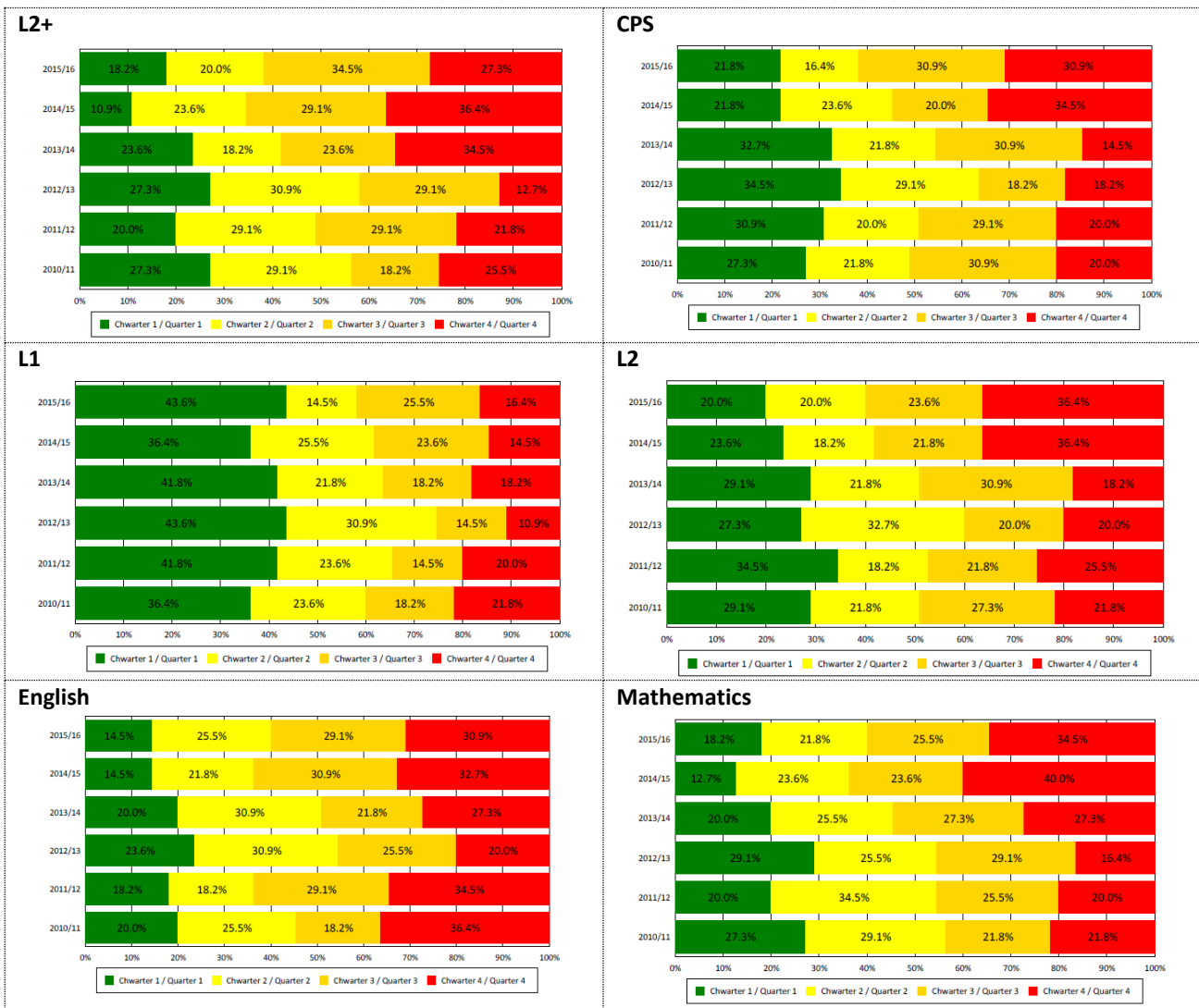
There has been strong progress in the percentage of pupils successfully achieving grades A*-C in English in Anglesey, Gwynedd and Denbighshire. However, only slight progress was seen in Conwy with a fall in Wrexham and Flintshire. There has been progress in the percentage of pupils successfully achieving grades A*-C in Mathematics in each of the 6 authorities. However, progress varies significantly between the authorities with the lowest progress in Conwy and Flintshire. The performance in Welsh First Language remains good across the region and is based on the number of candidates rather than all the year's cohort. However, there was a reduction in the percentage achieving A*-C in Welsh First Language in Gwynedd (the authority with the highest percentage of its cohort following Welsh First Language). The percentage of learners achieving Level 2 Science in the region is lower this year. This reduction is also apparent on a national level as more schools enter pupils to follow GCSE Science rather than vocational qualifications. The largest decrease in the L2 Science was in Conwy with a significant increase in Wrexham.

Performance of individual schools

In 2016, around a third of all schools were within 1% of their final projections for the L2+; around two thirds achieved their projection or were within 5%; and only 6 schools (11%) where performance was 10% below their projection. This is an improvement on the situation in 2015 where too many schools were below their final projections.

Generally in 2016, too many schools across the region perform below the median in the FSM benchmarking for the key performance indicators (except at Level 1) and in English and mathematics. This is a cause for concern.

Table 5: distribution of school in the FSM benchmarking quartiles



The performance of individual schools varies significantly within and across Local Authorities. Whilst the FSM benchmarking profiles for Gwynedd, Denbighshire and Anglesey are generally as expected or better, the profiles for Conwy, Flintshire and Wrexham are a cause for concern with too many schools below the median in most if not all key indicators. The profile for each school and Local Authority are included in the embedded files:



Individual School Performance.xlsx



LA Benchmarking Profile KS4.pdf

Moving forward

Improving standards in local authorities that are performing lower than their comparative FSM ranking and their expected benchmark in key performance indicators and especially in the L2+ is still a major priority, as is reducing the number of schools falling below the median in the FSM benchmarking in these indicators. GwE also had a disappointing Estyn inspection this year. As a result, a Consortia review of current strengths and weakness has been commissioned and is taking place. The desired outcome of the review will map and align the delivery of national priorities closely to local needs and ensure improvement happens at a faster pace in a more flexible and fluid manner especially at secondary level.

What we are doing well and improving

- Improving standards in primary sector
- Estyn inspection profile for the GwE region compares favourably with the national profile
- GwE knows its schools well and categorises its schools appropriately
- Quality of support and challenge by CAs has considerably improved. Effective generic and tailored support programmes have led to measurable improvements in individual CA performance
- Revised framework for challenging and supporting schools beginning to have a positive impact on standards and inspection findings
- Data analysis and information management systems have been greatly improved
- Regional commissioning of further action needed to secure further progress and refocusing of resources
- Robust business planning process implemented with clear lines of accountability defined
- Comprehensive and coherent range of programmes developed to improve leadership
- Progress against WAO and Estyn findings

Expectations in going forward:

- Raise standards in each key stage
- All 6 Local Authorities perform well relative to their FSM rankings in all key stages, especially at Key Stage 4
- No school to be placed in an Estyn statutory category
- Achievement of FSM and MAT pupils is a priority in each school
- Strong progress made in addressing the recommendations made by Estyn and the Wales Audit Office
- Ensure close collaboration with Welsh Government to deliver national initiatives across the region
- Ensure leadership in all schools is at least good
- Governance, leadership and management of GwE is good

Tasks and Challenges

- Introduce a coherent targeted programme in around half of our secondary schools to improve standards and leadership
- Implement a robust Peer Review in Wrexham and Conwy LAs that will address underperformance issues and plan sustainable significant improvement in performance across all key stages
- Match national initiatives closely to the need of schools and group of schools to accelerate the development of a self-improving school system